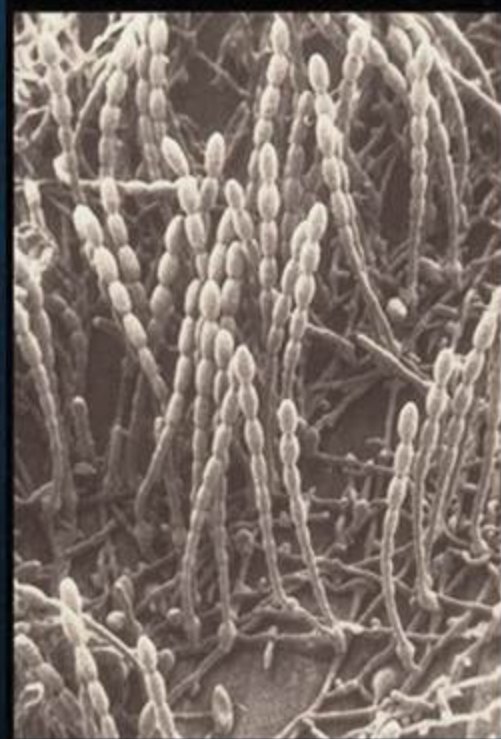


GROWTH AND REPRODUCTION

- Different pathogens grow **intercellularly** & **intracellularly** inside their host
- Growth & reproduction rate depends upon invasion behavior of the pathogen
- Method of reproduction
 - Asexual
 - Sexual
 - Replication in case of majority of sub-microscopic pathogens
- Growth and reproduction of the pathogen is affected by
 - Pathogen aggressiveness
 - Susceptibility of the host tissue
 - Environmental factors



DISSEMINATION OF THE PATHOGEN

- **Dissemination (Dispersal / Spread / Transmission)**, Transport of spores or infectious bodies, acting as inoculum, from one host to another host at various distances resulting in the spread of the disease.
 - **Passive:** wind, water, insects, man, animals, machinery
 - **Active:** move on own power (e.g. some bacteria, zoospores of Oomycetes, Fungi- spores expelled forcibly).
 - **Effective:** if displacement occurs on a susceptible host and where the environment is suitable, the pathogen can grow and multiply.
 - **Ineffective:** when plant pathogen does not get any medium for its survival. For example, if it falls on a stone.